

## News on *Campylaea illyrica* (Stabile, 1864) (Pulmonata, Helicidae, Ariantinae)

A.A. SCHILEYKO

A.N. Severtsov Institute of Ecology and Evolution, Russian Academy of Sciences, Leninsky  
Prospect 33, Moscow 199071, RUSSIA. Email: [asch0829@gmail.com](mailto:asch0829@gmail.com)

**ABSTRACT.** Dissection of adult specimens of *Campylaea illyrica* showed that penial papilla of this species is very similar to those of the type species of the genus *Faustina*.

In my recent article an illustrated description of the copulative apparatus of a single subadult specimen of the type species of the genus *Campylaea* – *Helix planospira* Lamarck, 1822 – has been presented [Schileyko, 2014: 180, Fig. 13]. The structure of the penis papilla in this specimen was so strange that I put the genus *Campylaea* in isolated position relatively of all other Ariantinae [op. cit.: 184, fig. 14].

On June, 30 and July, 1, 2015, Dr. Helmut Sattmann, Sonja Bamberger, and the author have collected 3 specimens of *Campylaea illyrica* (Stabile, 1864) – the species closely related to *Campylaea planospira*, in two localities in Carinthia, Karawanken Ridge: 1. Vellacher Kotscha (30. VI) and 2. Tschepaschlucht, Löblpass (1.VII). Two of them were nearly adult, the third was fully adult.

### Results

Subadult specimen from Vellacher Kotscha (Fig. 1 A). Penial papilla consists of two fleshy unequal lobes. Surface of the lobes is nearly smooth. Inner surface of the penis with very weak irregular relief, consisting of shallow circular grooves. Walls of the papilla filled with loose parenchyma, without distinct lacunae. Inner surface of the atrium and vagina with smoothed axial folds. Stimulator is absent.

Nearly adult specimen from Tschepaschlucht, Löblpass (Fig. 1 B). Differs from previous specimen by the presence of distinct circular grooves on the surface of the papilla and much more expressed relief on the inner surface of the penis. This relief is a strong longitudinal pilaster consisting of prism-like tubercles. There is an additional, weaker pilaster. Walls of both lobes of the papilla, except parenchyma, contain a central lacuna. Inner surface of the atrium and vagina has same relief as in the previous specimen, but somewhat weaker. Stimulator is absent.

Fully adult specimen from Tschepaschlucht, Löblpass (Fig. 1 C). Copulative apparatus has same structure as in the previous specimen, but all the elements of relief are stronger. Inner surface of the atrium and vagina is nearly smooth. Stimulator is absent.

### Discussion

As a basis for discussion, we assume that *Campylaea illyrica* and *C. planospira* are really closely related species, and the information that is set for *C. illyrica*, apply to the type species of the genus *Campylaea*.

The strangest feature of the juvenile specimen of *C. planospira*, described in the mentioned article [Schileyko, 2014] is that the papilla in this individual has turned into a “velum” covering the opening of the epiphallus. Such a structure of papilla is not observed in any other representative of Ariantinae.

Dissections of three specimens of *C. illyrica* of different ages showed that the mentioned “velum” is, apparently, a larger lobe of papilla, while the smaller lobe in the juvenile *C. planospira* is not yet formed.

Two-lobed papilla of adult *C. illyrica* is very similar to that of *Faustina faustina* [see Schileyko, 2013: 137, fig. 8], that suggests the relation between *Faustina* and *Campylaea*. A significant difference between these genera is that *Campylaea*, unlike *Faustina*, has no stimulator.

### Acknowledgement

I would like to express my gratitude to Dr. Helmut Sattmann and Sonja Bamberger for help in obtaining the material.

### References

- Schileyko A.A. 2013. Family Helicidae excluding Helicinae (Gastropoda Pulmonata): morphology, taxonomy, and a catalogue of taxa. *Ruthenica, Russian Malacological Journal*, 23(2): 127-162.
- Schileyko A.A. 2014. On the morphology of copulative apparatus of some Ariantinae (Pulmonata Helicidae). *Ruthenica, Russian Malacological Journal*, 24(2): 173-187.

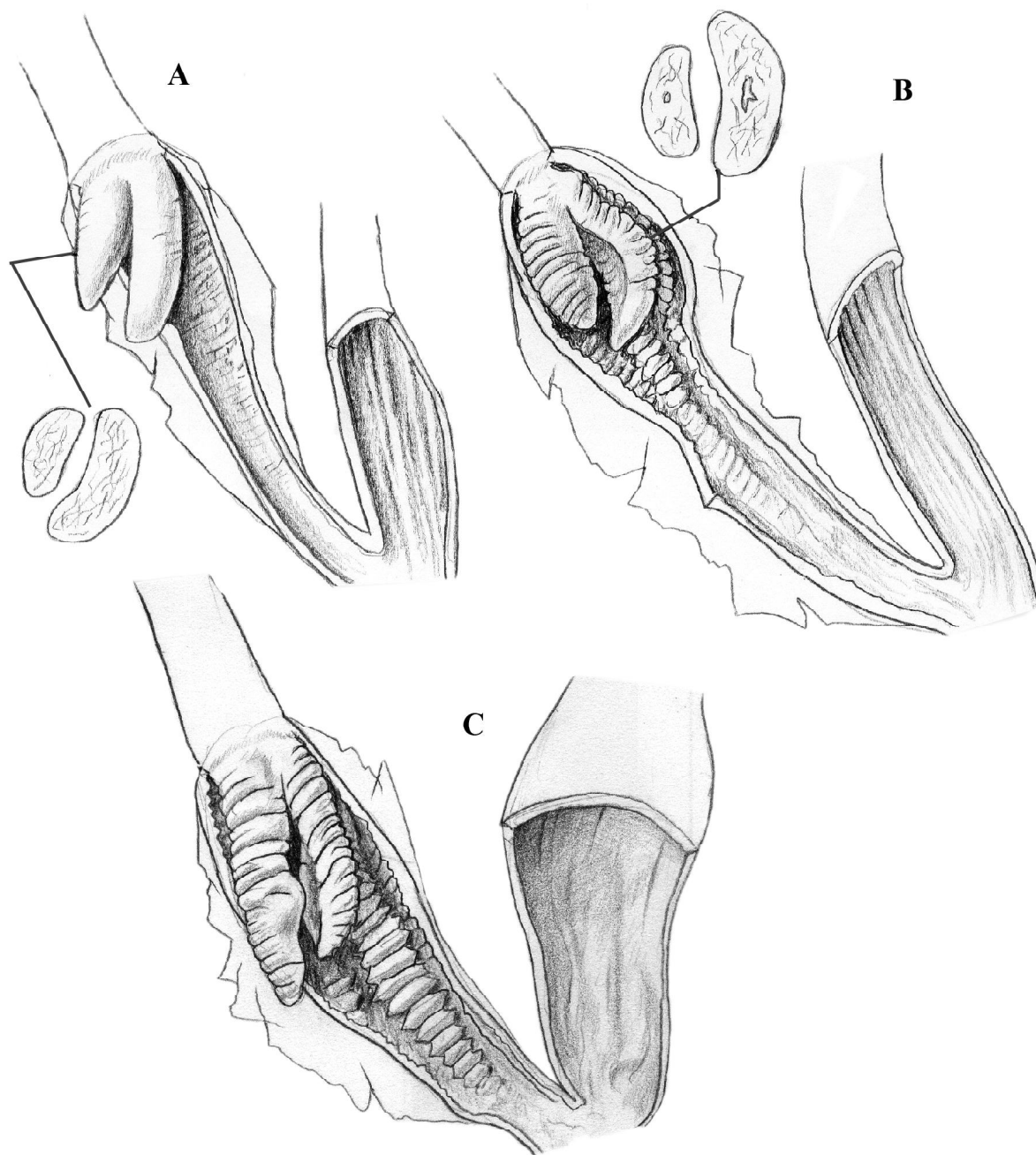


FIG. 1. Copulative apparatus of three specimens of *Campylaea illyrica*. A – subadult specimen from Vellacher Kotscha. B – nearly adult specimen from Tscheppaschlucht, Löbpass. C – fully adult specimen from the same locality.

РИС. 1. Копулятивные органы трех экземпляров *Campylaea illyrica*. А – неполовозрелый экземпляр из Vellacher Kotscha. В – почти половозрелый экземпляр из Tscheppaschlucht, Löbpass. С – половозрелый экземпляр из того же местонахождения.

Новые сведения о *Campylaea illyrica* (Stabile, 1864) (Pulmonata, Helicidae, Ariantinae)

А. А. ШИЛЕЙКО

Институт проблем экологии и эволюции им. А.Н.

Северцова РАН, 119071 Москва, Ленинский пр., 33;  
Email: asch0829@gmail.com

**РЕЗЮМЕ.** Анатомическое исследование половозрелых особей *Campylaea illyrica* из Каринтии показало, что пениальная папилла этого вида очень напоминает папиллу типового вида рода *Faustina*.